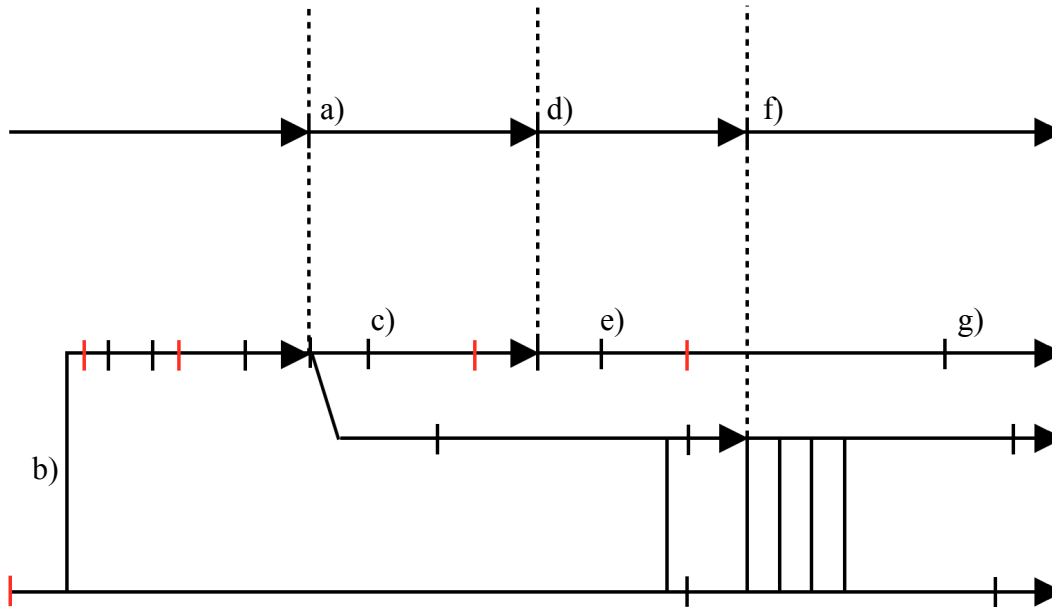


Part 1: Anchor Fact TimeLine

1. Use the diagram to help you provide the dates and/or names of the events or periods labelled:



Dates

- a) _____
- b) _____
- c) _____
- d) _____
- e) _____
- f) _____
- g) _____

Events

- 1607/8: _____
- 1823: _____
- 1945: _____
- 1787/9: _____
- 1964/5: _____
- 1993: _____
- 1861-5: _____

Periods

- 1776-1861: _____
- c.3000BC - c.1769: _____
- 1492-1776: _____
- c.1769 - 1869: _____

Bonus

- 1526: _____
- 1831-61: _____
- 476 AD: _____
- 1946: _____

Part 2: Pre- and Proto- Industrial Life

2. What was “pre-industrial” life like? How long did human beings live that way?

3. What invention leads to the era of “proto-industrial” history? What type of common sense observations lead to this kind of invention, and what kind of science is needed?

4. Why is it difficult to choose a date for a complicated invention? What’s one way to deal with that problem?

5. What's the use of distinguishing between "proto-industrial" and "industrial"? What are the differences between the two periods?

Part 3: Industrial and Advanced Industrial History

6. In what sense do we still live in "industrial" times? In what sense do we live in a more advanced era?

7. What does "ENIAC" stand for? What was its purpose? What advantage did this type of invention provide?

Part 4: Advanced Industrial Food

8. What industrial technology first boosted the amount of food available to human beings? What new technology was needed once this abundance caused many people to move from farms to cities?

9. What are the main components of the Green Revolution? Explain each term that you use. Who is recognized for his unique role in this particular story of progress?

10. What are “organic” foods and GMOs? Why is even the controversy about these things a sign of progress?
