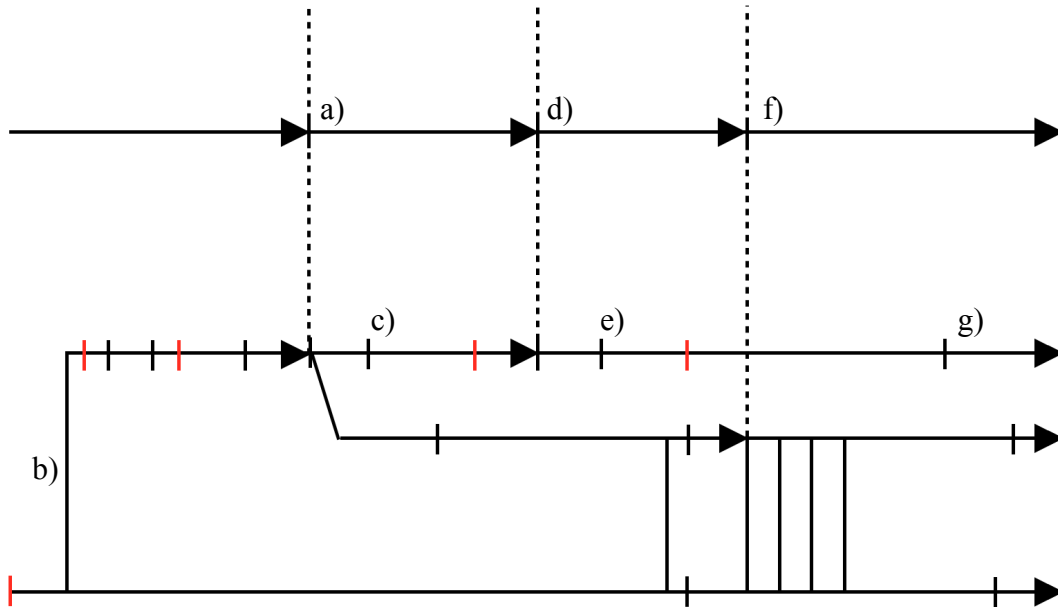


Part 1: Anchor Fact TimeLine

1. Use the diagram to answer the questions below:



Dates

- a) _____
- b) _____
- c) _____
- d) _____
- e) _____
- f) _____
- g) _____

Events

- 1607/8: _____
- 1823: _____
- 1945: _____
- 1787/9: _____
- 1964/5: _____
- 1993: _____
- 1861-5: _____

Part 2: Pre- and Proto- Industrial Life

2. What invention started “proto-industrial” history? What’s another name for this “age”?

3. Why is it difficult to choose a date for a complicated invention? What do we put in front of the date sometimes to show that and what does it mean?

Part 3: Industrial and Advanced Industrial History

4. What two *industrial* inventions do we still use? What are the *three* advanced industrial inventions?

5. What does “ENIAC” stand for?

Part 4: Advanced Industrial Food

6. What industrial technology (a kind of “food for food”) first boosted the amount of food available to human beings?

7. What does a pesticide do? What does a herbicide do? What “revolution” are modern herbicides and pesticides a part of?

Part 5: Bonus

8. What was the nickname of the ENIAC?

9. Who was the first person to walk on the moon?

10. Who created the Standard Oil Company?
